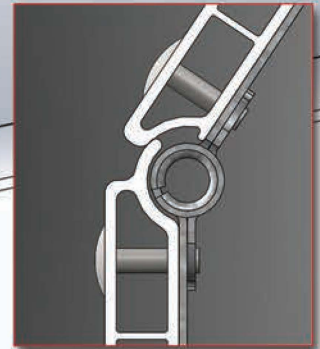


WEATHERTITE™ PRO

Next Generation Weather Resistant Door

**100%
Recyclable**

- New highly engineered co-polymer substrate
- Higher heat tolerance – Increase of 23% over PVC per ASTM D648 Heat Deflection Testing @ 66 psi
- Panel weight is 25% less than PVC and 37% less than standard wood panels
- Improved impact resistance
- Automotive grade UV stability and finish color
- Proprietary engineered panel design proven with 15 years industry use
- Interchangeable with current WeatherTite™ panel
- 10 Year Limited Warranty
- 1" or 2" track and rollers
- Available with high strength center and removable roller end hinges, three rows of center hinges and heavy duty bottom fixtures



Anti-Pinch & Anti-Drip Design:
Eliminates pinch point at panel joint and protects cargo by preventing water from dripping between the panels onto cargo when in operation.

FEATURES	BENEFITS
Co-Polymer Substrate	Impervious to moisture eliminating problems of swelling, warping, finish delamination and rotting.
Smooth Panel Surface	Allows for an automotive quality paint finish and excellent decal adhesion.
Anti-Pinch Panel Joint	Eliminates pinch point at panel joint.
Anti-Drip Design	Prevents water from the exterior of the door from dripping between panels onto cargo when in operation and moving through the radius.
Reduced Door Weight	Reduced weight allows the option of utilizing a long-life counterbalance spring eliminating costly downtime and maintenance costs.
Greater Impact Resistance	Reduced downtime & maintenance costs.



phone: 740-383-6376 • toll free: 800-999-3392
visit us at www.todco.com

